

REVISED PLAN

THIS COPY HAS BEEN MADE BY OR WITH THE AUTHORITY OF BYEDALE DISTRICT COUNCIL PURSUANT TO SECTION 47 OF THE COPYRIGHT DESIGN AND PATENTS ACT 1988. UNLESS THAT ACT PROVIDES A RELEVANT EXCEPTION TO COPYRIGHT, THE COPY MUST NOT BE COPIED WITHOUT THE PRIOR PERMISSION OF THE COPYRIGHT OWNER.

DIMENSIONS				Please Note: These floor plans only show approximate dimensions for a Typical Partner Home of its type. Within N-BC guidelines, the dimensions for a specific house may vary as each house is built.			
GROUND FLOOR				FIRST FLOOR			
Lounge	5.160 max x 3.530 max	16'11" x 11'7"		Bedroom 1	3.057 max x 4.185 max	10'0" x 13'9"	
Kitchen	2.900 x 4.928	9'6" x 16'2"		Bedroom 2	2.754 x 4.273	9'0" x 14'0"	
Cloaks	0.878 x 1.695	2'11" x 5'7"		Bedroom 3	2.301 x 2.893	7'7" x 9'6"	
				Bathroom	1.983 x 2.025	6'6" x 6'8"	

E	08.11.16	GRP Chimney added.	JRW
D	02.11.16	Partitions to 75mm. Dims adjusted to suit.	JRW
C	14.10.16	Bathroom adjusted, for boxing/recessed basin.	JRW
B	10.10.16	Client Spec amends. Partition adjustments. PV Panels added.	JRW
A	29.07.16	Client amends. Kitchen/Dining area.	JRW
REV	DATE	DESCRIPTION	NIL

Partner

AD Title

PARTNER - '2015' RANGE (CAT 1 : PART (M))
HOUSE TYPE 'YH112' WORKING DWG.

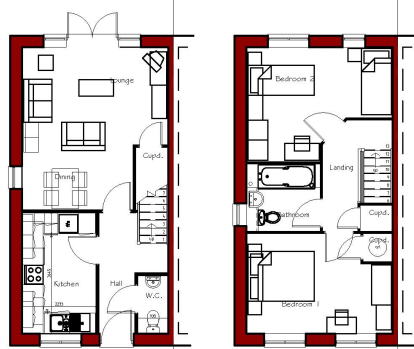
Dep. Title

GFA = 90.82m² (969 sq ft.)

SKETCH PLAN & ELEVATIONS

DATE 10/11/16

Drawn	JRW	Checked	-	Dep. Size	Dep. No.
Scale	1:100	Date	05.05.16	A3	P015 - YH112/1



Ground Floor Plan
GFA 38.02m2 (37.25m2)

Ground Floor Plan
GFA 38.02m2 (37.25m2)

REVISED PLAN

THIS COPY HAS BEEN MADE BY OR WITH THE AUTHORITY OF RYEDALE DISTRICT COUNCIL PURSUANT TO SECTION 41 OF THE COPYRIGHT DESIGN AND PATENTS ACT 1988. UNLESS THAT ACT PROVIDES A RELEVANT EXCEPTION TO COPYRIGHT, THE COPY MUST NOT BE COPIED WITHOUT THE PRIOR PERMISSION OF THE COPYRIGHT OWNER.

DIMENSIONS				Please Note: These floor plans only show approximate dimensions for a Typical Partner Home of its type. Within NHBC guidelines, the dimensions for a specific house may vary as each house is built.			
GROUND FLOOR				FIRST FLOOR			
Lounge	4.350 max x 4.858 max	14'3" x 15'11"		Bedroom 1	4.350 max x 2.969 max	14'3" x 9'9"	
Kitchen	2.188 x 3.600	7'2" x 11'10"		Bedroom 2	4.350 max x 3.391 max	14'3" x 11'1"	
Cloaks	0.875 x 1.695	2'10" x 5'7"		Bathroom	2.159 max x 1.963 max	7'1" x 6'5"	

D	08.11.16	GRP Chimney added.	JRW
C	02.11.16	Partitions to 75mm. Dims adjusted to suit.	JRW
B	14.10.16	Bathroom adjusted, for boxing/recessed basin.	JRW
A	11.10.16	Client Spec amended. Partition adjustments. PV Panels added.	JRW
REV	DATE	DESCRIPTION	INTL

Partner

A3 Title

PARTNER - '2015' RANGE (CAT 1 : PART (M))
HOUSE TYPE 'YH114' WORKING DWG.

GFA = 76.64m2 (818 sq.ft.)

Dep. Title

SKETCH PLAN & ELEVATIONS

DATE 10/11/16

Drawn	JRW	Checked	-	Dep. Size	Dep. No.
Scale	1:100	Date	11.05.16	A3	P015 - YH114/1